

Quick Check Drive Thru with Quick Tread

Flush Mounted



Drive Thru Quick Check and Flush Mount Quick Tread Installation

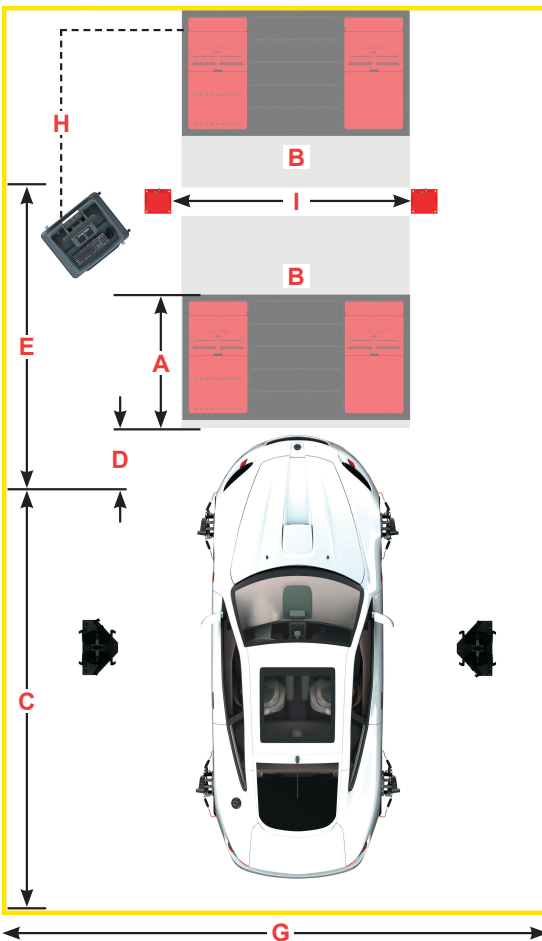
NOTE: See 6797-TE for complete information, including air supply, environmental specifications and UL certifications.

Site Specifications	
Power Requirements	115/230v, 15 amp* 50/60 Hz 1 ph ¹
Air Supply Req. (SI Units)	6.2-10.3 bar (90-150 PSI)
Substructure Specifications	Refer to Form 6905-T
Internet Connection	Ethernet cable recommended
Product Specifications	
Max. Wheel Weight	1588 kg (3500 lbs) per wheel
Test Entry Speed	3-13 km/h (2 to 8 mph)
Shipping Weight	
Quick Check Cabinet	132 kg (290 lbs)
Quick Check Drive Under Sensor	143 kg (316 lbs)
Quick Tread	455 kg (1000 lbs)

*Amperage shown is minimal circuit rating.

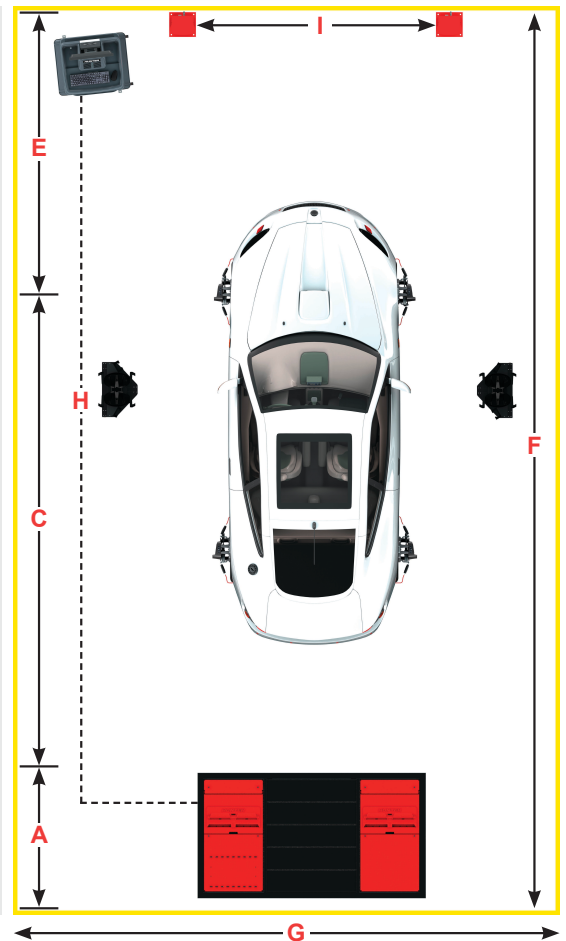
¹Isolated ground recommended.

ALIGN COMP BEFORE QT* OVERALL FOOTPRINT QT BEFORE ALIGN COMP



*Quick Tread (A) can be placed anywhere in B, provided it does not interfere with C and D. Alignment Compensation before Quick Tread is a 14.4 software option that must be enabled.

- A: 1397 QT1F Footprint Length.
- B: QT1 Placement Zones.
- C: 4191 mm Typical Max Wheelbase.
- D: 610 mm compensation allowance.
- E: 2413 - 3048 mm from Front Wheel Stop to Rear of Sensor.
- F: 8696 - 8001 mm Total Typical Recommended Bay Length.
- G: 4572 mm Recommended Bay Width.
- H: 22.86 m of communication cables connect console to Quick Tread pedestal. Add cable as necessary. Pedestal can be placed on either side of unit.
- I: 2743 - 2896 mm Sensor Height.



Continued on Page 2

For inspection information visit:
www.hunter.com/inspection

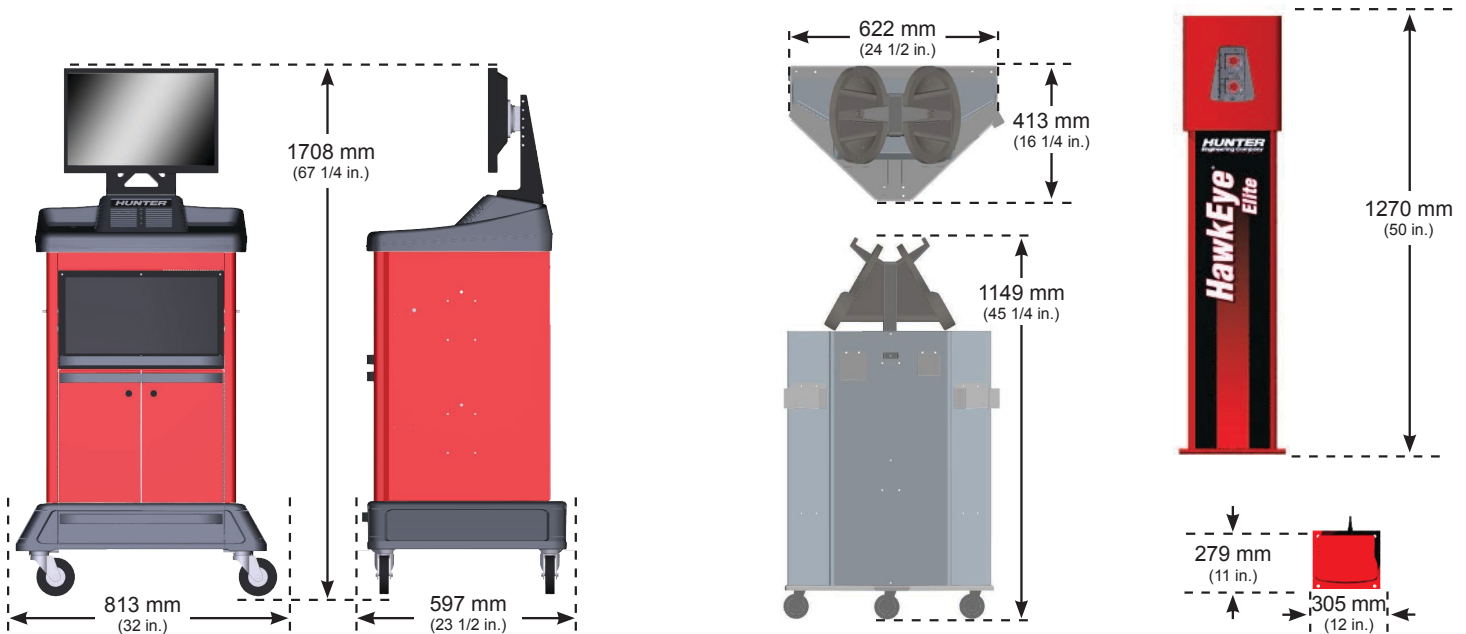
For general inquiries visit:
www.hunter.com
or call
800 448-6848

For local contact visit:
www.hunter.com/company/contact-hunter
Form 6895-TE, 04-16a
Supersedes Form 6895-TE, 11-15
Copyright © 2015 - 2016, Hunter Engineering Company

Quick Check Drive Thru with Quick Tread

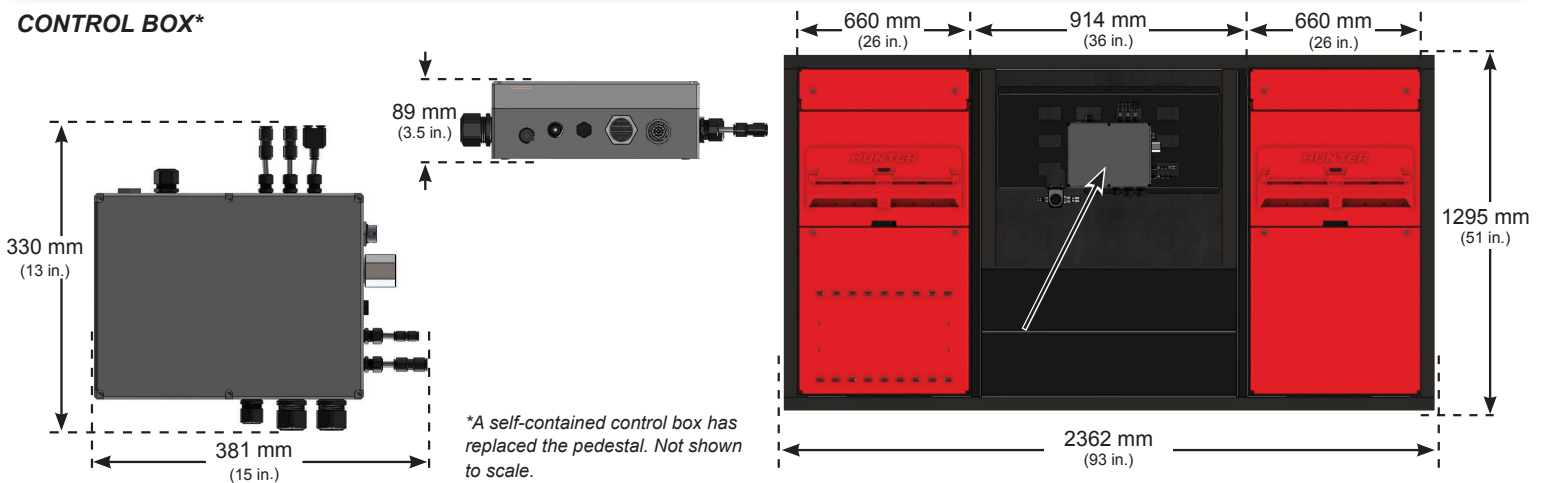
Flush Mounted

QUICK CHECK DIMENSIONS



QUICK TREAD DIMENSIONS

CONTROL BOX*



PIT & CONDUIT SPECIFICATIONS

END VIEW

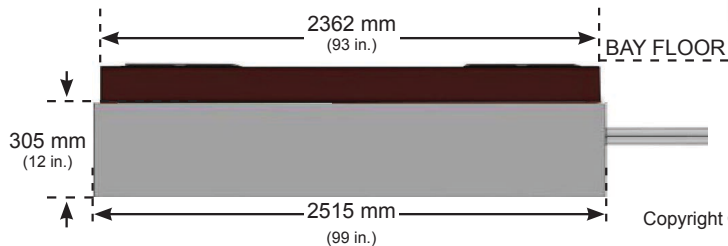
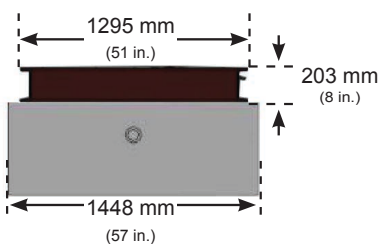


QUICK TREAD:
HUNTER
SUPPLIED

SIDE VIEW



QUICK TREAD
SUB-STRUCTURE:
CONTRACTOR
SUPPLIED



Quick Tread's 76 mm (3 in.) underground conduit must be routed to the control box and console according to local codes. Conduit can enter the substructure through any of its walls. Exact placement of conduit will vary. Refer to Form 6905-T.